

DISPATCH SHOWROOM

Clockwise from top left: The hot-rolled steel reception desk is accented with Blade suspension lamps in antiqued brass by Baxter. Paola Lenti armchairs, side tables and the Shell pouf—in shades of green and turquoise—add a pop of color; the Marlene mirror by Baxter draws the eye toward a vignette featuring a Living Divani Islands console and an Oluce Atollo lamp; the Jupiter table by Baxter is surrounded by Baxter Gemma dining chairs and a Baxter Proton Cone suspension lamp.



And what are some things the business offers that might surprise readers? We specialize in designing boutique closet and dressing rooms. The closet is becoming one of the most important spaces in our clients' homes. Designers, architects and homeowners seek our services and products to create highly customized dressing rooms and personal sanctuaries that add real value to the home.

How does Space Bazaar stand out from other businesses in the area? We represent some of the most important brands in interior design that, if you wanted them, for a very long time, you had to travel to Europe, Los Angeles or New York to purchase them. Now, they are available in the Southwest.

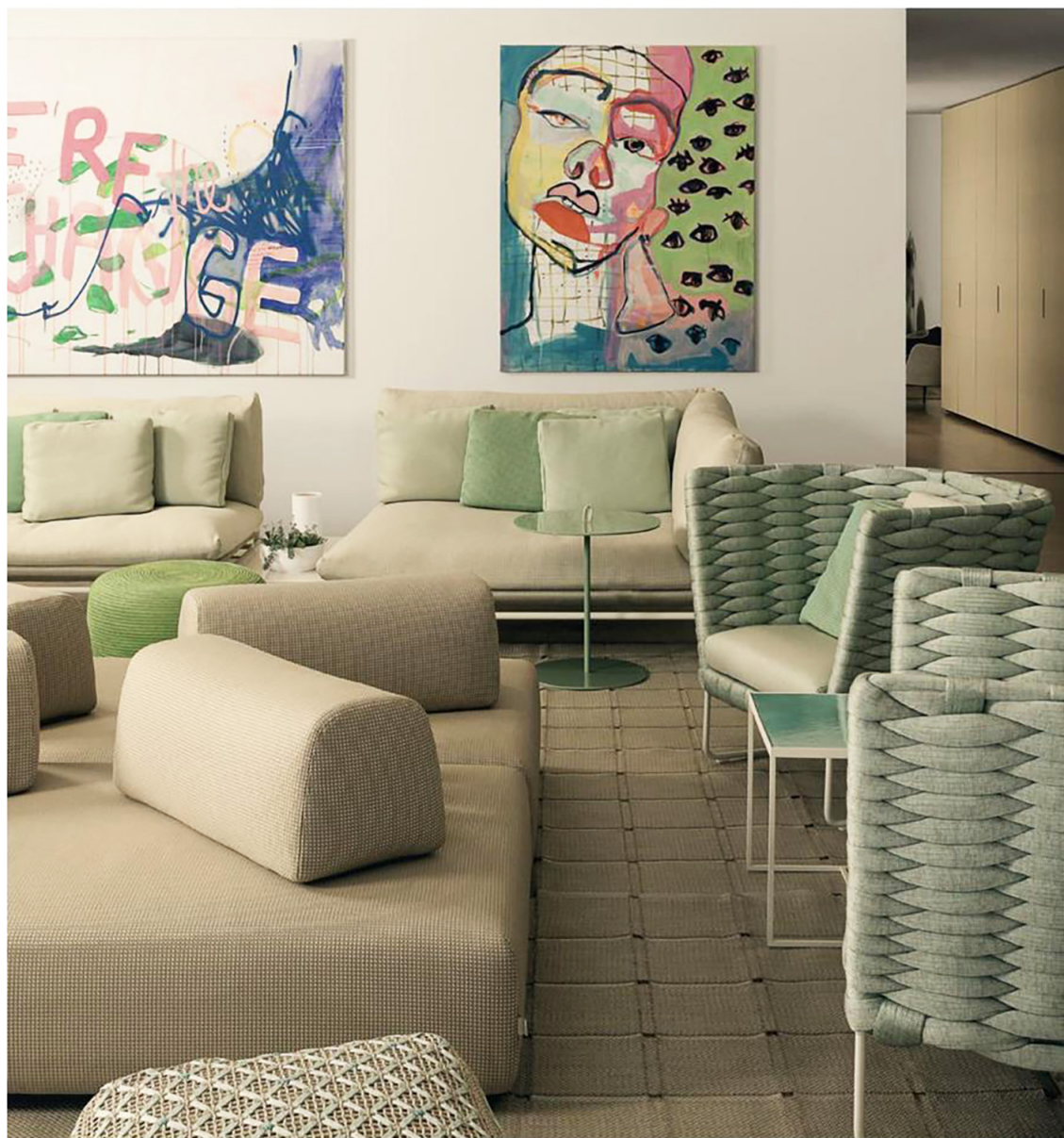
How does the showroom reflect your personal tastes and style? I am a minimalist at heart and value quality and attention to detail. My showroom has

incredible architectural details and is very well edited and executed.

Where do you get your design inspiration? Italy, of course. It's in my DNA and is an extension of my life and work. Italian fashion and design are the emblem of style and elegance of the bel paese (beautiful country).

What can readers expect next from you and Space Bazaar next?

We are in the process of expanding. I am opening a monobrand B&B Italia showroom in Downtown Scottsdale off Third Avenue in a building designed by Chen + Suchart Studio. It will be the first to open in the United States under Lissoni & Partners' new and contemporary B&B Italia retail identity. ◉



From top: Outdoor furniture by Paola Lenti mingles with colorful artwork by German artist Joséphine Sagna; a setup featuring Flexform pieces—including the Groundpiece sofa, Bangkok ottomans in hide leather, the Fly side table in Noce Canaletto and the Brigs coffee table—is welcoming and elegant.

“I AM A
MINIMALIST
AT HEART AND
VALUE QUALITY
AND ATTENTION
TO DETAIL. MY
SHOWROOM
HAS INCREDIBLE
ARCHITECTURAL
DETAILS AND
IS VERY WELL
EDITED AND
EXECUTED.”

—JENNIFER WILSON