



1 SQUARE

A new 3D texture in the Dimension Walls collection, Square takes on a different profile depending on which angle it's approached from. The thermoplastic cladding — in sheets 122 by 244 or 305 centimetres — comes in a range of metallic finishes, from red and silver to the Burnished Brushstroke shown. mdcwall.com

2 ATMOS

Under Pure+FreeForm's new Interiors umbrella, this series of painted aluminum sheets is offered in a standard size (122 by 450 centimetres) or formed into panel systems for both wall and ceiling applications. Custom shapes are also offered, like the rest of the product line, in more than 20 finishes. purefreeform.com

Modern Metals

ADD INTEREST AND DEPTH TO INTERIOR PROJECTS WITH PANELS — FLAT, 3D OR PERFORATED — IN LUSTROUS METALLIC FINISHES

WORDS _Kendra Jackson

3 NUBILA

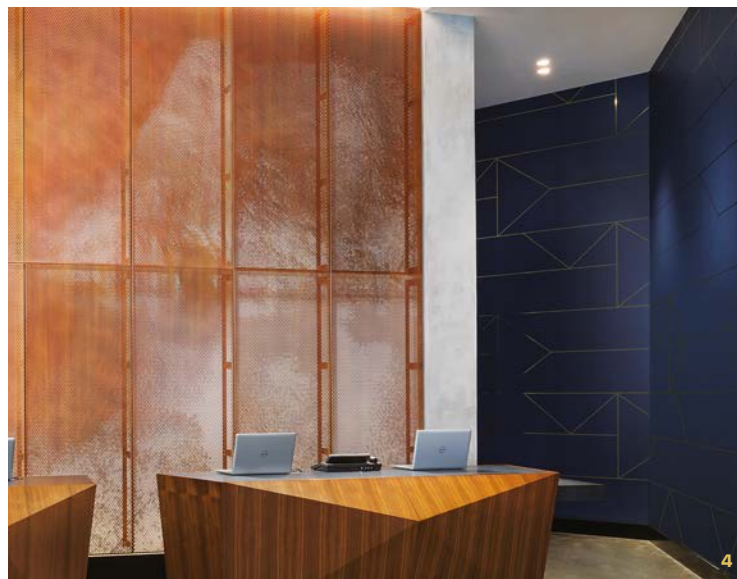
Part of Paola Lenti's foray into wallcoverings, these single-faced wood fibre panels are clad in a close weave fabric coated in copper that has undergone a unique oxidation process. A collaboration with Italian metals studio De Castelli, the panels come in four colours (Foliage is shown). They're fixed using a hooked mounting system and separated by rigid copper elements. paolalenti.it

4 BACKLIT METAL SOLUTIONS

Coupled with a new key-slot wall system, these ready-to-install perforated and laser-cut aluminum panels can now be backlit from above, below or behind by integrated LED strips. Five perforated and 27 laser-cut patterns are available, while custom designs can be accommodated. All are available in a variety of colours and finishes or digitally printed images. mozdesigns.com



3



4