

**PAOLA
LENTI**



is a member of E. BON group

no. 1a electric street/star street
wanchai hk
t/ +(852) 3102 0808
f/ +(852) 3102 0818
e/ info@viahk.biz

www.viahk.biz

opening hours

10.30 > 19.00
monday > saturday

11.00 > 18.00
sunday



A PLACE IN THE SUN

Located on idyllic Hamilton Island, Solis is a cliff-top wonder made from glass, concrete and travertine. This haven of a house is a treat not only for the eyes, but also for the soul

位於澳洲Hamilton Island上的Solis是一間建於懸崖邊的矚目大屋，由玻璃、混凝土和石灰華打造而成，為視覺及身心也帶來最舒適的享受

BY MARTINA HUNGLINGER
PHOTOGRAPHY MAD S MOGENSEN



“The client said that all he wanted was a three bedroom house,” says Sydney-based Italian architect Renato D’Ettorre. It’s a statement that might suggest the home in question is a touch dull – and even suburban – were it not for the fact that the home being discussed is a tropical hideaway, located on the idyllic Australian paradise that is Hamilton Island.

For D’Ettorre, this was something of a dream job. It provided him with a major opportunity to use the resource that most inspires him: water. His fascination with the substance began when he was a child in Abruzzo. “We would go to the countryside and I was always attracted by rivers, creeks and springs, by their sound and movement,” he explains.

The American owner of Solis was familiar with D’Ettorre’s work on Hamilton Island and knew right away he’d found the right person to work on his own home. Starting on the basis that each piece of land is unique and special, D’Ettorre began the project by photographing each rock on the site. It took him four hours. “You have all these beautiful rocks,” he points out, “I wanted to figure out how to fit the house in between them without actually removing too many, so that the design fit the space and not the other way around.”

There were other restrictions, too. The need for a maintenance-free house reduced the appeal of timber. At the same time, Hamilton Island has tight restrictions

「客人說他想要的就只是一間設有3個睡房的屋子。」駐悉尼的意大利建築師Renato D’Ettorre回憶說。這次介紹的大屋座落澳洲一個如天堂般漂亮和諧的島嶼——Hamilton Island——之上，所在之處正正是在一大片大自然之中，環境優美寧靜，是一個熱帶世外桃源。雖然客人的要求很簡單，但當交到D’Ettorre的手上時，居所的建築與設計絕不會比這裡的迷人環境遜色。

對於D’Ettorre來說，這次的項目可說是他夢寐以求的工程——讓他能盡情運用一種經常為他帶來無限靈感的天然資源：水。他對這種資源的偏愛是源於小時候；在他還是小孩子時，他是住在Abruzzo。「每當我們前往近郊的地方時，我總是會被河流、小溪和溫泉等深深吸引住，我十分陶醉於這些天然現象的聲音和流動美感。」他解釋說。這種特別的喜好啟發他創作很多精彩的設計，當中當然包括這間澳洲大屋Solis。

Solis的美國主人十分熟悉D’Ettorre在Hamilton Island上負責過的項目，而且非常欣賞他的才華，所以他知道D’Ettorre能為他的居所打造出與別不同的裝潢。在工程一開展的時候，由於每片土地都是獨一無二，所以建築師做足準備，給地上每一塊石頭拍照作紀錄，而這個過程總共花了他4個小時才完成。「這裡有著很多漂亮的石頭。」他指出：「我想好好研究一下怎樣能把這些石頭恰當地加進大屋的設計中，好讓我們不用移走太多石塊，設計也能融於環境中，而不是由環境遷就屋子。」

此外，工程中還遇上很多外在的限制，為建築師帶來不少挑戰。由於屋子要打造成一個無須保養的結構，所以

previous page: The main living area, near the lap pool

opposite: Looking up to the second storey, the orange pouf is Paola Lenti’s Shell. The grey island coffee table, Sahara floor rug and Landscape mats are by Paola Lenti

above left to right: The open concrete structure makes the most of the ocean views; a corner of the upper lap pool

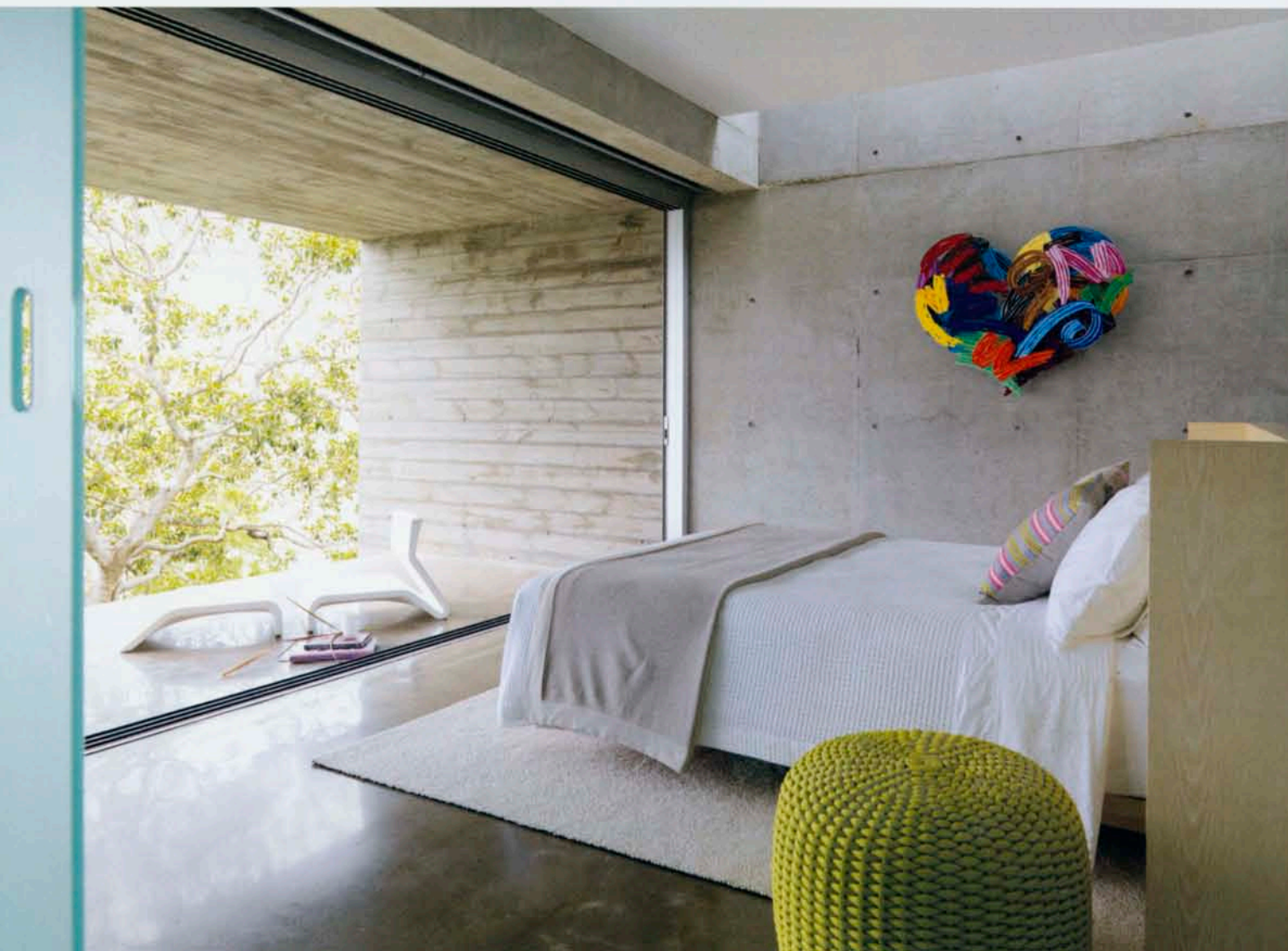
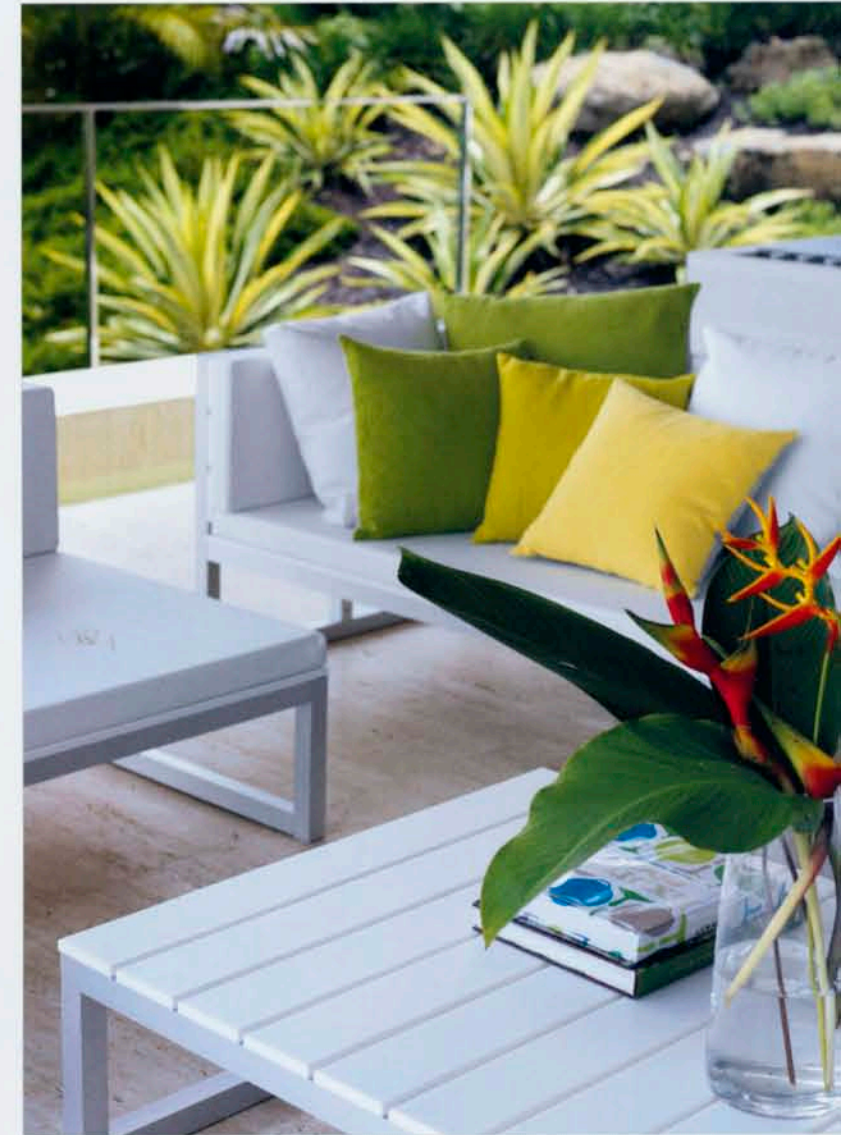
前頁圖：主客廳位於泳池旁

對頁圖：橙色的厚墊是Paola Lenti的Shell，而Island咖啡桌、Sahara地毯和Landscape墊也是Paola Lenti的出品

上圖左至右：開揚的混凝土結構能盡覽海景；上層泳池的一角



"A HOUSE SHOULD BE BI-DIMENSIONAL: HAVING VIEWS TOWARDS THE SEA AND THE COURTYARD. ONE SHOULD NOT KNOW WHERE THE FRONT OR BACK IS," SAYS D'ETTORRE, WHO SURROUNDED THE HOUSE WITH PONDS, POOLS AND CASCADES



plunge pool. The owner and his guests can retreat here when the mercury rises. A cascading waterfall curtain and intense turquoise water create a grotto-like effect, while bare hot feet will find they almost glide along mirror-like floors, polished with a diamond grinder.

One of the great attractions of sub-tropical climates is the plant life. At Solis, the garden is constructed like a labyrinth so that visitors can absorb the experience gently, freely following winding paths. Underfoot, soft grass adds to the lush experience of paths filled with native greenery. The tree varieties are a roll call of tropical heaven: frangipani, jacaranda, boab, leopard, rainbow shower, lemon, butterfly and flame trees. And then there are the tropical grasses and plants. All conspire to create a space that is tranquil and in balance with the surroundings.

"This house is designed to both entertain and relax," comments D'Ettoire. It is a house that can reflect whatever mood you happen to be in, as it should be."

身心。室內一道窗簾有如瀑布的水向下傾瀉，再加上外面遼闊的藍綠色大海，共同製造出一個洞穴般的環境，氣氛寧靜。假如你赤腳在這兒走動的話，會好像在一大片鏡子之上滑動著一樣，因為這裡的地板是以金剛石磨石作打磨，平滑得來又富光澤。

亞熱帶氣候區內有一個十分迷人的特色，就是其天然的植物世界。Solis的花園有如一個迷宮，當你走進其中時，需要花上多一點的時間才能走出來；這個設計其實別有用心，建築師是想令客人們多逗留一會，深入體驗這個地區的植物生態。腳下種滿了柔軟的小草，當人們沿著小徑前行時，四周盡是翠綠宜人的環境，讓人的心情也頓時放鬆下來。不同品種的樹木為這兒築成一個小小的熱帶天堂：包括雞蛋花樹、藍花楸樹、紫羅蘭樹、彩虹旗那樹、檸檬樹、蝴蝶樹和影樹等，還有各種熱帶青草和其他植物。這些擁有不同外貌和特性的綠色生命共組成一個寧靜的天地，令人心曠神怡。

「這間屋子是特別為餐宴和放鬆身心兩大用途而設計的。」D'Ettoire總結說：「這間大屋能反映出你置身其中時的心情，而這也是它的獨特之處。」❖

opposite top to bottom: One of the bedrooms. The furniture here – from the bed to the rug and the pouf under the desk – reads like a roll call of Paola Lenti's finest designs; the master suite and its bathroom.

above left to right: The luxe bathroom off the master suite. Shell pouf by Paola Lenti; the covered terrace near the barbecue area

對頁圖上至下: 其中一間睡房擺放了Paola Lenti的睡床、地毯、厚墊等，猶如其設計的展覽廳，主人房及套房浴室的設計

上圖左至右: 圖中的Shell厚墊來自Paola Lenti；有蓋平台旁設有一個燒烤區