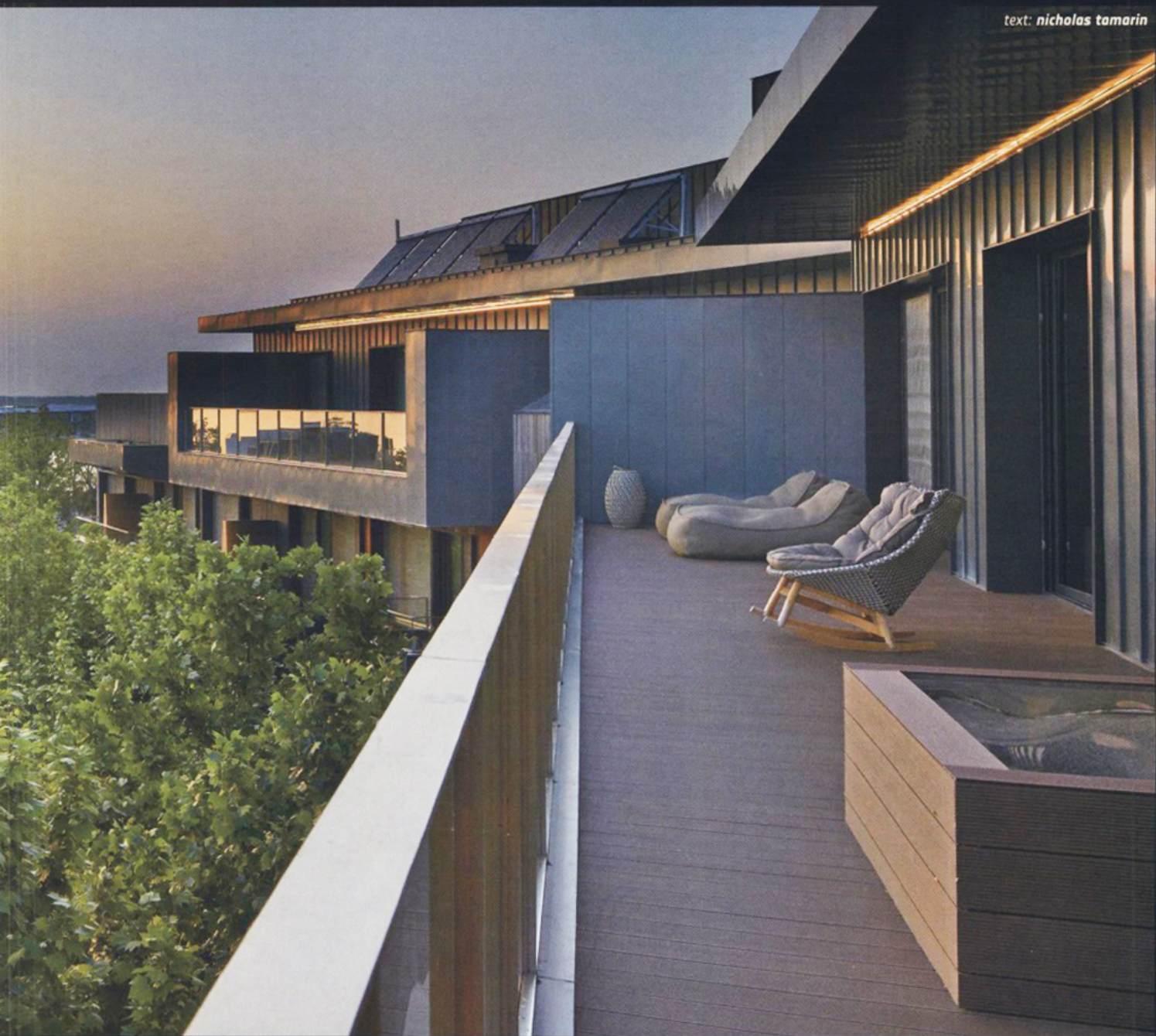


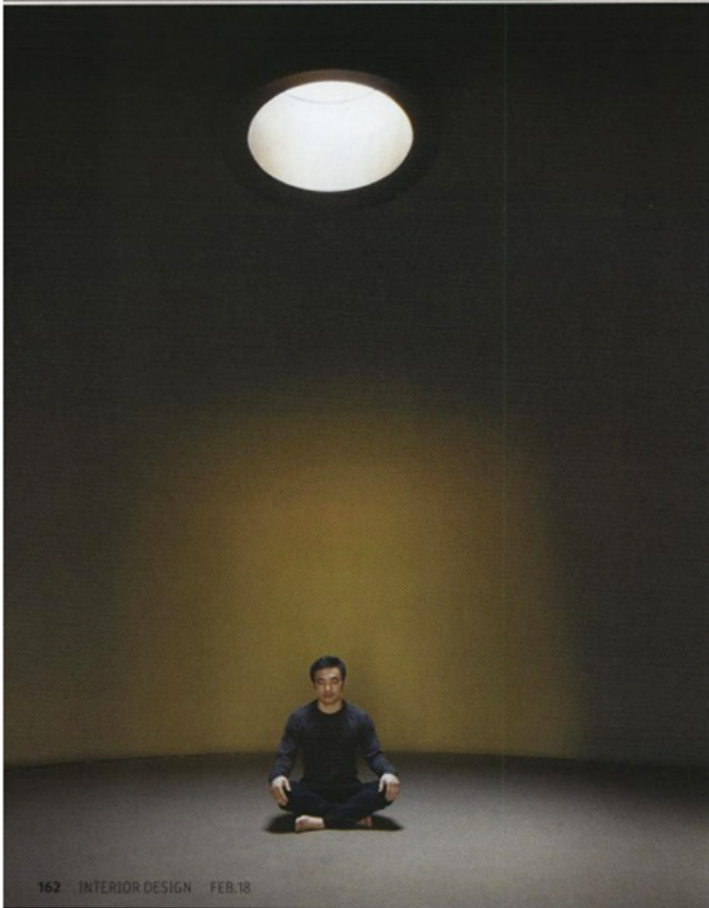
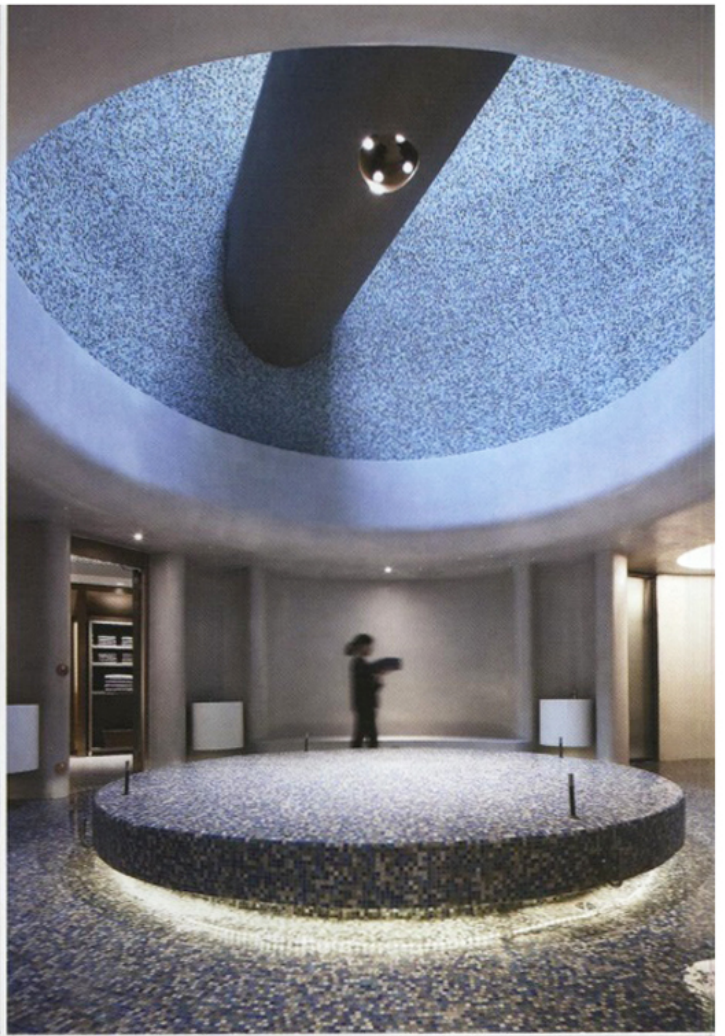
For Sangha by Octave, a Chinese wellness community, Tsao & McKown was both planner and architect

harmonic combination

text: *nicholas tamarin*



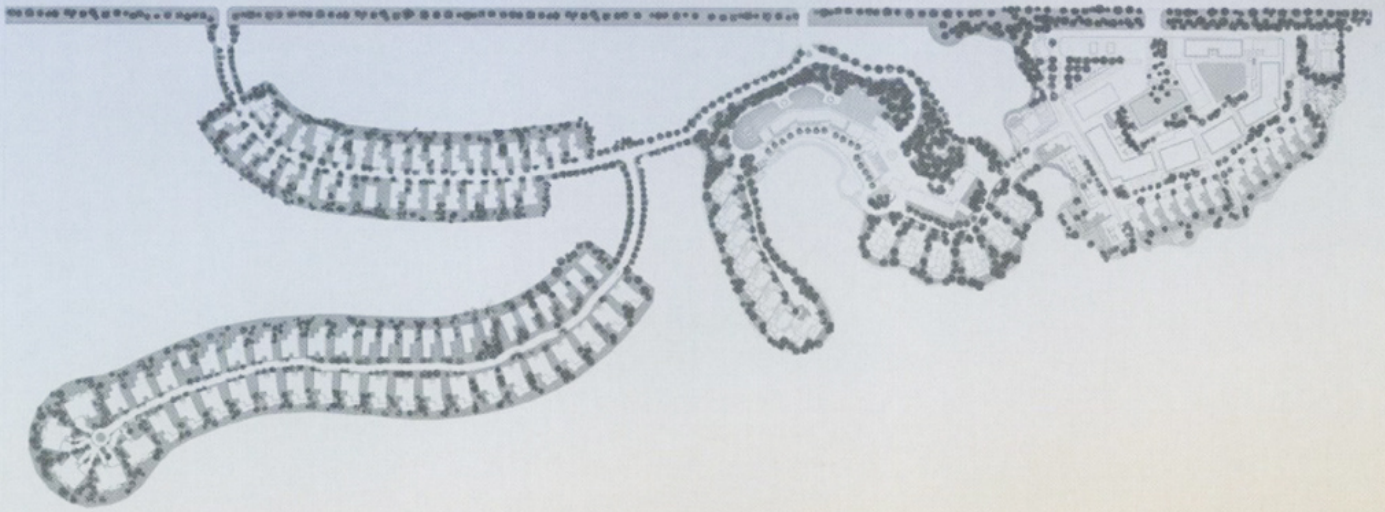






Top, from left: Man-made peninsulas with 109 houses; photography: courtesy of Design Land Collaborative. Plantings of native vegetation; photography: courtesy of Design Land Collaborative. The lap pool along a cove; photography: Seth Powers. A fountain with a bronze surround; photography: Seth Powers. Bottom: The bridge spanning the lap pool is reclaimed wood. Photography: Seth Powers.







and electricians. All were invited to the opening reception, which quickly turned into a party for them. That's highly unusual in a country where they're unaccustomed to being celebrated for their work. "We would have nothing without them," Tsao says. "They're taught that they're nobodies, but they're *somebodies*." 🍷

PROJECT TEAM

BRIAN CABANISS; YUNYUAN DENG; JONATHAN HOOVER; MIKE HSIEH; PAUL LEE; JODEL NARCISSE; CHANDLER OLDHAM; RICHARD RHODES; KARIN BOSTANCI; MIKE LEE; ANA GOLDSTEIN; JOAN BOMBARDÒ MARTÍ; YE LIU; JOANNA GULIK; LORRAINE GLOVER; DANIELLE JUSTINO; ANDY HARTMANN; JOSEPH ROBERTS; VAN HSIN-HUNG TSAO; CHING TAI; MATT CONRAD; EDWARD OO; WILLIAM VINCENT; CORNELIS BRINKMAN; JOHN JHEE; TUAN LUONG; TSAO & MCKOWN ARCHITECTS. BRANDSTON PARTNERSHIP: LIGHTING CONSULTANT. PA WELLNESS CONSULTANCY: SPA CONSULTANT. IMD: AUDIOVISUAL CONSULTANT. AURECON: MEP. GREEN FORTUNE: PLANT WALL CONTRACTOR.

PRODUCT SOURCES

FROM FRONT RESYSTA INTERNATIONAL: DECKING (TERRACE). PAOLA LENTI: CHAISES. DEDON: ROCKER (TERRACE), HANGING SEATS (SPA). HAY; PUSU; SAWKILLE: CHAIRS (RECEPTION). BARK HOUSE: PANELING. DESIGNTEX: SOFA FABRIC, LOUNGE CHAIR FABRIC (TEAROOM). DANISH ART WEAVING: DINING CHAIR FABRIC (TEAROOM), SOFA FABRIC (LOBBY). GLEN RAVEN: SOFA FABRIC (TERRACE). LARSEN: SOFA FABRIC (SUITE). CORTINA LEATHERS: CHAIR UPHOLSTERY. THROUGHOUT MUFENG; ONG PACIFIC: CUSTOM FURNITURE. TAI PING CARPETS: CUSTOM RUGS. RONGGUAN: MOSAIC TILE.

that would ordinarily be a "nothing space," Tsao says, if it weren't for a kinetic light installation with a disco vibe.

Fresh air can be had in the community vegetable garden and alongside the unusual lap pool, a ribbon of water that follows the U shape of a cove. You can't swim in the lake—a protected habitat for the Shanghai hairy crab, with its claws that resemble spiky mittens. But you can stroll through the sunken, stepped "town square." Tsao also likens it to a college campus quad.

Finally, there's the gallery. Its debut exhibition featured photographs of the contractors who made Sangha possible: concrete mixers, pavers, bricklayers,

"Part of Sangha is for the body, and part is for the mind"

