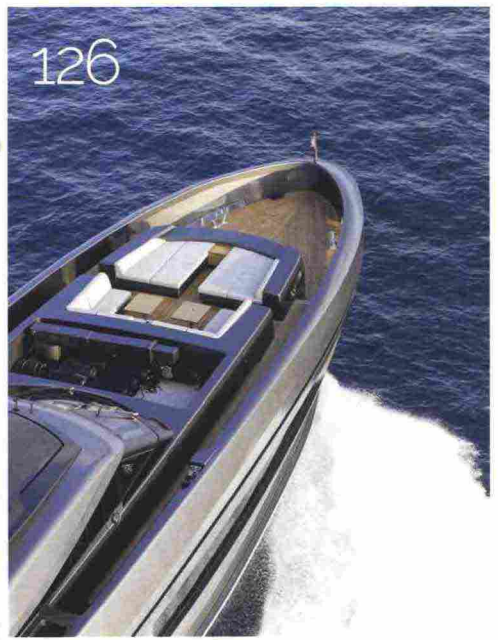
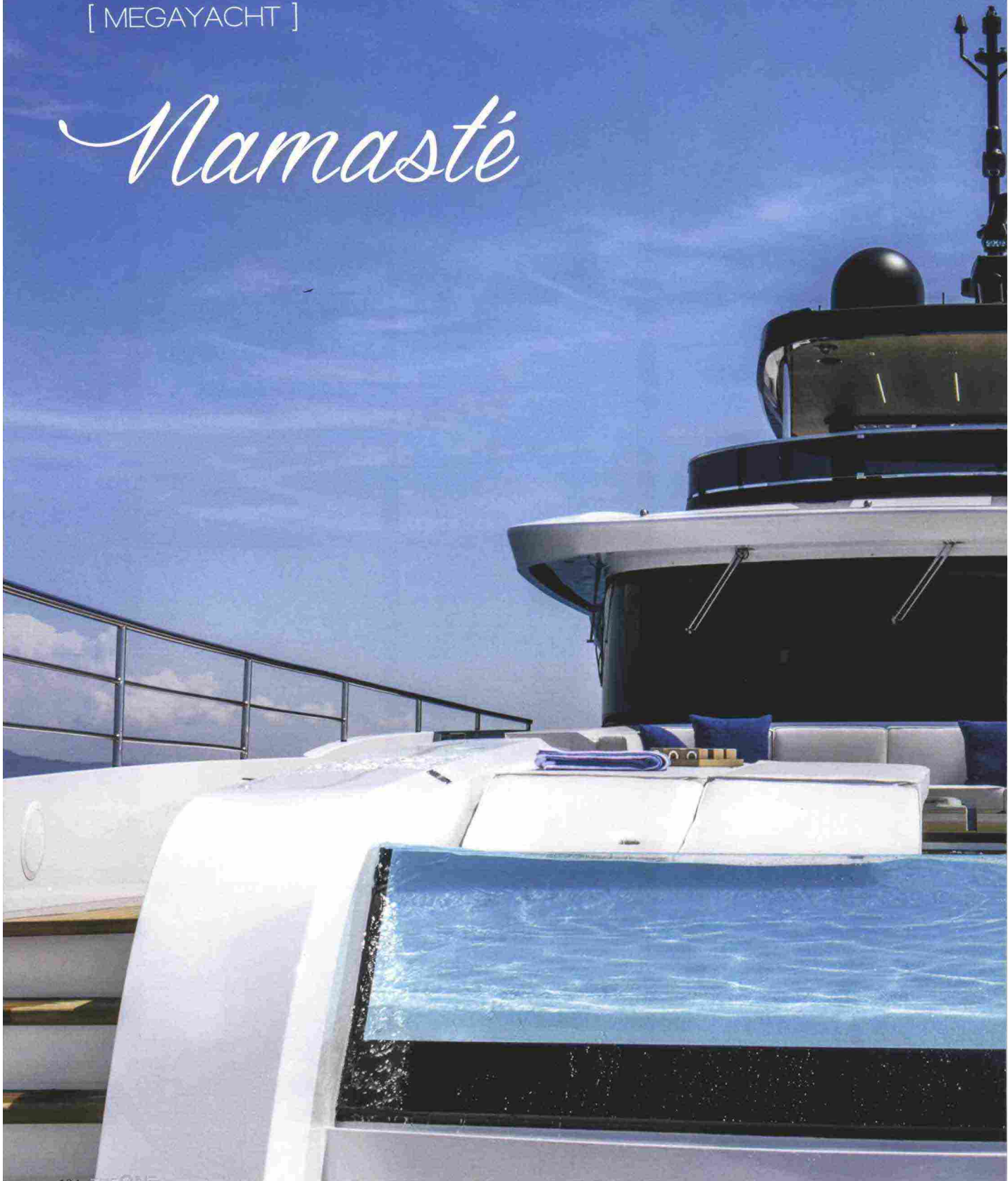


- 96 Mise en Place: Organic Design
- 100 Gourmand: The Complex Art of Simplicity
- 104 Megayacht: Mangusta Oceano Namasté
- 116 Trend Setters: Paola Lenti
Design and Exclusivity
- 122 Bespoke 1: Luxury on Demand
- 126 Megayacht: Baglietto Lucky Me
- 138 Bespoke 2: Sumptuous Living
- 142 Technology: Radiant Reflections
- 146 Megayacht: Custom Line Navetta 37
- 158 Young Talents: The Owners of Tomorrow
- 160 Jet Concepts: A Revolution in our Skies



[MEGAYACHT]

Mamasté



The Overmarine Group has made a name for itself in the fast open maxi sector – the Mangusta line the yard is famous for boasts over 300 craft from 22 to 55 metres in length - but with this Mangusta Oceano 42-metre it has triumphantly inaugurated a new long-range production line, with 46, 55 and 60-metre models also currently on the cards.

The flair and originality of Alberto Mancini's designs convinced Maurizio Balducci, CEO of Overmarine Group, to entrust him with an important, if not crucial, model for the yard. The Mangusta Oceano 42 number 1, called Namasté, is the Trieste designer's first yacht over 40 metres, and was a something of a challenge, given the tough job of inaugurating the large metal yacht line intended for long-distance ocean sailing.

The Mangusta Oceano 42 is a refined mix that will conjure up images of the past, but it also shows a definite commitment to Mangusta's future, with generous spaces and elements that emphasise its sporty character, the brand's true DNA. It features a series of conceptual, development and design innovations, which have made it one of the year's most widely-admired yachts. We think that of all the craft we visited at the shows, this was the most original, especially where the interiors are concerned. On the main deck the nubuck and leather Minotti sofas complement the nubuck and leathers used for the entirely custom-made furniture, including the specially commissioned Bespoke tables. The wenge-style varnished oak flooring is clad in Ralph Lauren carpets in the living and dining areas, as well as forward, both with contrasting brown and beige geometric patterns.

All the ceilings are clad in Alcantara or raw silk, creating a warm yet bright interior. The owner's cabin, also on the main deck, has planed and wenge-varnished oak underfoot, partially covered by an ivory-coloured bamboo fibre carpet. Two nubuck and fabric sofas face the balcony that opens up the space to the sea. The en-suite bathroom is large and extremely beautiful, featuring Eramosa marble in the shower and floors.

The yard has named the four cabins that make up the lower deck sleeping area after four of the world's most famous seaside destinations – Saint-Tropez, Bodrum, Bergama and Mauritius – emphasising the yacht's globetrotting credentials and giving a clue to the variety of decorative schemes. Marble is a constant in all the bathrooms, coordinated in a different way in each one – Thassos and Botticino, Thassos, Olimpo and Sicis with royal and cobalt blue, Thassos, Olimpo and Sicis with Therapy green mosaic, and Thassos with teak. The taps and fittings are different, too – Faubourg, Onix Noir, Bamboo Cristal Clair and Bamboo Cristal Arancione, and the cabins have different types of flooring – white-painted planed oak, hazel coloured planed oak and teak with white wood seams. Not forgetting the doors – natural oak with a silky suede inlay, natural oak with leather inlay, natural oak with embossed leather inlay. One of the few constant elements is the nubuck used for the furniture.

The yacht can be regarded as a symbol of the quality that Viareggio, the centre of Italian yachtbuilding, and the Overmarine Group can offer with their luxurious, exclusive craft.

www.overmarine.com





An evocative shot from above of Namasté under way, and the main deck conversation area. Opening page, the lovely infinity pool with waterfall. An illuminated skylight in its floor fills the owner's suite bathroom below with an original play of refractions.



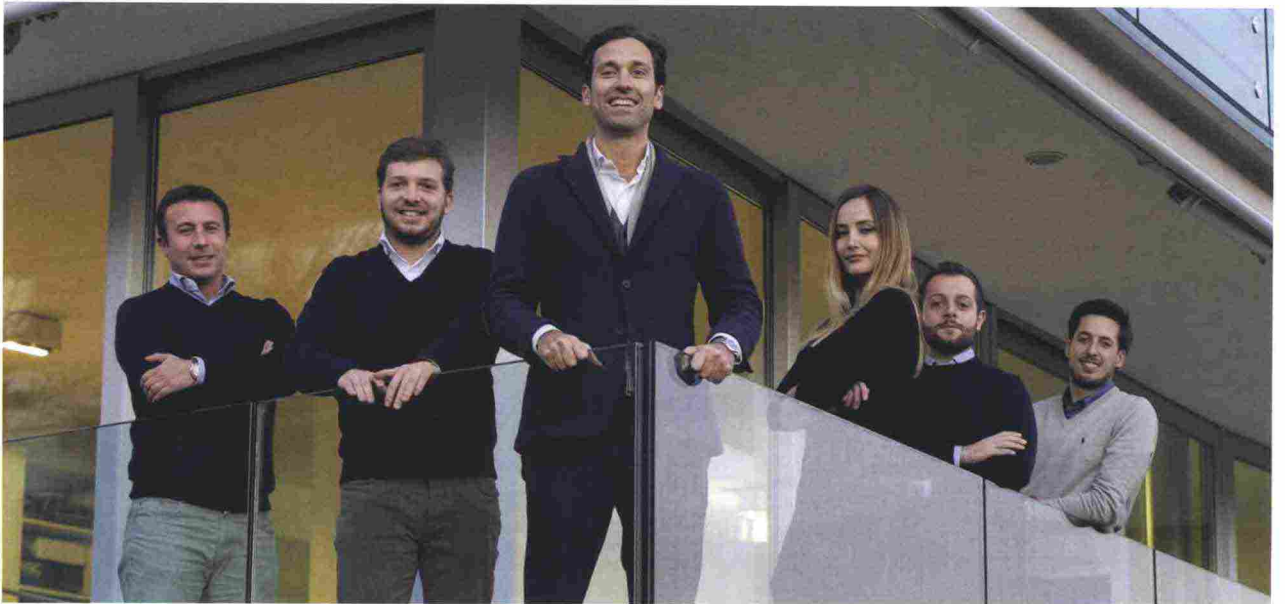
Interior Design Alberto Mancini

I've tried to open out the interiors, making them as light and airy as possible, especially through a holistic use of light, a philosophical approach to lighting design that I've researched intensely. This involves using the natural light flowing from the outside to the interiors, passing through surfaces that are usually impenetrable, and light flooding in through the large windows present throughout the yacht, together with artificial units positioned to cast an indirect light, creating a sensation of space, of being on board a larger craft. To give this feeling an omnipresent impact we paid a lot of attention to eliminating potential architectural barriers that could interrupt the sweeping perspectives. A lot of the interior furnishings were made to measure for this yacht – of course, this all reflects a combination of the owner's tastes and my creativity, which I prefer to rely on, rather than looking at what others are doing. When necessary I seek inspiration in industrial design, especially auto design for the exteriors. That's probably the area with the most intense emphasis on research, and it's the one where manufacturers provide the most exciting stimulus. I also draw on art, one of my passions, nature and everything I encounter during my frequent

international journeys. My studio carried out some in-depth research for the interiors of the Mangusta Oceano 42, seeking highly original elements, not just for their own sake, as a mere stylistic exercise, but integrated into a setting offering liveability, practicality, and a sensation of wellbeing.

On Namasté I've tried to create a furnishing and decor project based on a play of colours, sometimes matching, sometimes contrasting, and also on a variety of materials that express a level of superior exclusivity. It's a full-custom build in the literal sense of the phrase, where every element of the furnishing and decor is specially designed to take its place on board.

The sun deck sofas are by Bespoke, as is the teak, glass and polished steel table. The table mount includes clear glass inserts that allow light to enter the deck below, a concept that extends right down to the beach club, where Paola Lenti loungers again make an appearance. The aft hatch opens downwards over the sea, adding to the space. To side, Alberto Mancini and his team, the designers of the yacht's interiors and exteriors



Paola Lenti

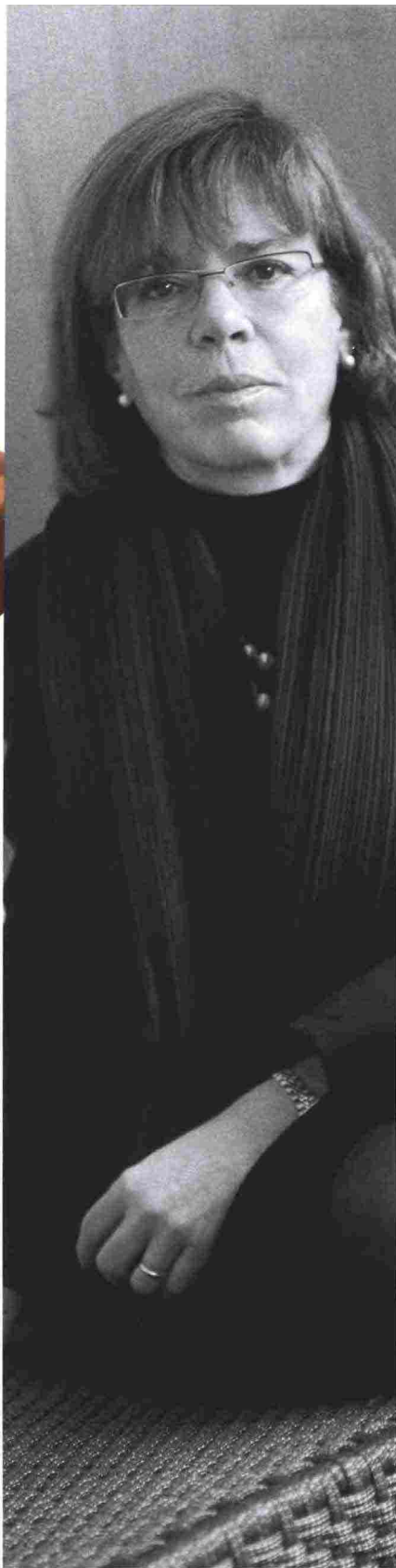


Paola Lenti's colourful collections comprise sofas, armchairs, tables, chairs, hassocks, rugs and accessories. Her commitment to constantly researching and sourcing new materials has rewritten the rules of residential, public and nautical décor

DESIGN AND EXCLUSIVITY

by Désirée Sormani





Paola Lenti (right) co-heads the company she founded in 1994, with her sister, Anna. The Paola Lenti brand has become an international touchstone for textiles and design. Opposite page, some pieces from her collection which add a chic originality to any lounge or terrace.

TREND SETTERS

© JEFF BROWN



They have the cool, fresh greenness of freshly mown lawns, the turquoise blue of the Sardinian sea, the yellowy warmth of the summer sun. We're talking, of course, about Paola Lenti's sophisticated interior and outdoor furniture collections. Timeless pieces made with creative flair and skill. Designed to encompass the kind of exciting new materials and finishes that make them absolutely different and suitable even for challenging environments such as yacht decks.

"Our research always centres around innovative materials that will deliver the best performances in outdoor spaces," says Paola Lenti, who runs the hugely successful international furnishing and textiles company she founded in 1994, with her sister Anna. "To be able to create

furnishings that can confidently withstand environments as severe as those aboard yachts where humidity and salinity are a factor, you have to use materials that really are of a superior quality."

"Our intention from the outset was to be able to use materials outdoors that were as attractive as the ones we used indoors. When we began looking at outdoor furniture in 2000, there were only very severe-looking, rather uncomfortable products around. There weren't many colours and finishes available either. We did some research and testing, and with the help and consultancy of some excellent collaborators, we gradually started producing our collections. As a result of our using colour, woven, metal and wood structures designed for durability, they now encompass comfortable modern seating and elegant rugs handwoven using high-tech materials." Unique designs both in terms of their looks and durability. The choice of materials is fundamental, as is the simplicity of the forms. These are designs that will stand the test of time, in terms of their sheer durability and their colours and designs. "We were convinced that our outdoor furnishings had to be different. So we immediately began imagining soft, attractive forms that also turned out to be perfect for megayachts. Since 2003, we have created products such as the Cove and Sabi seating which really won over the market, not merely because of their design but also the exclusivity of their materials, which is the real secret to our success." The company now enjoys an international reputation in the yacht sector. This is also due to the quality of its



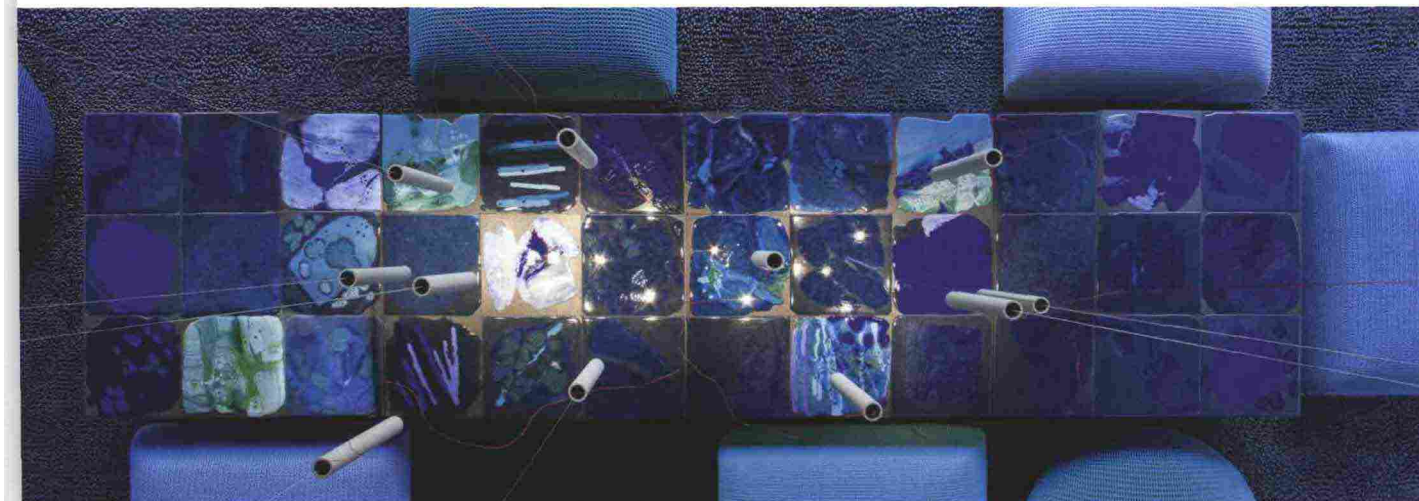


PHOTOGRAPHY BY SAN LORENZO

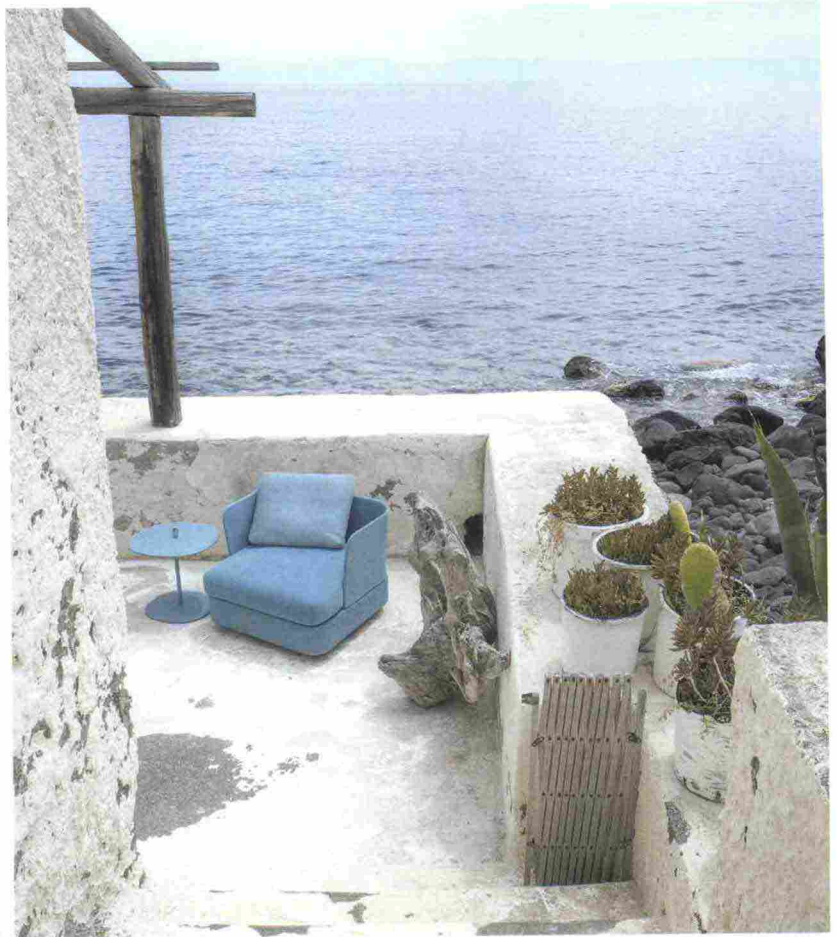
materials and the uniqueness of its designs and it has developed high-profile and enduring relationships with some of the world's leading yards, including Benetti, Sanlorenzo, Wider, Viareggio Super Yacht and Lürssen.

Paola Lenti has been a regular at the Monaco Yacht Club for quite some time too, working with the brand's sole distributor in the Principality, Sabrina Monte-Carlo, on the décor and fit-out of the Upper Deck Lounge, the focal point of the entire show. "When they choose our collections, yards are guaranteeing themselves exclusive products: we do a lot of bespoke commissions and we can work around any kind of request, customising forms and colours. Sometimes we've modified a product in the collection to suit an owner's wishes but we

Above, the Paola Lenti Aqua Collection is featured on the decks of Sanlorenzo's 460 Explorer Moka and on the Wider 150 Genesis (top left, the beach club). Below, examples of the Sciarra collection and, opposite page, bottom, the Ease outdoor sofa, now a yachting favourite



[TREND SETTERS]



will only do so if it is in line with our own philosophy: a less-is-more approach that produces simple, linear objects that integrate harmoniously into the outdoor environment.”

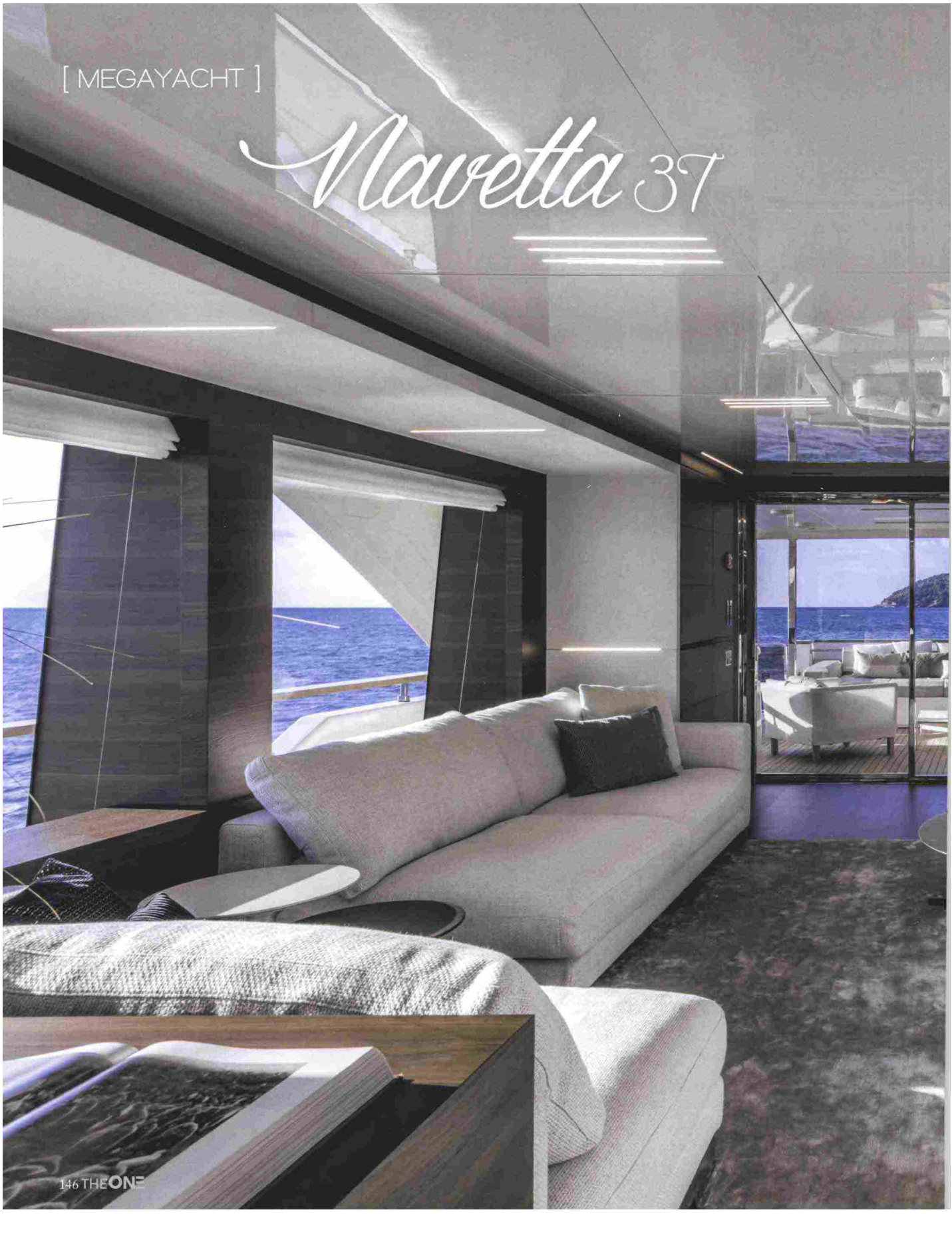
So what products does Lenti feel are a must-have aboard? “Definitely classic, timeless products of the likes of the Cove, Frame and Orlando sofas. I also find the Portofino folding chair collections very interesting. Then lots of big, casual cushions that are sumptuously comfortable and really make you feel like you are on holiday!”

This page, further pieces from the Paola Lenti catalogue. The internationally-renowned Italian designer furnishing brand also does a lot of bespoke work, which means its furniture and accessories are ideal for onboard use



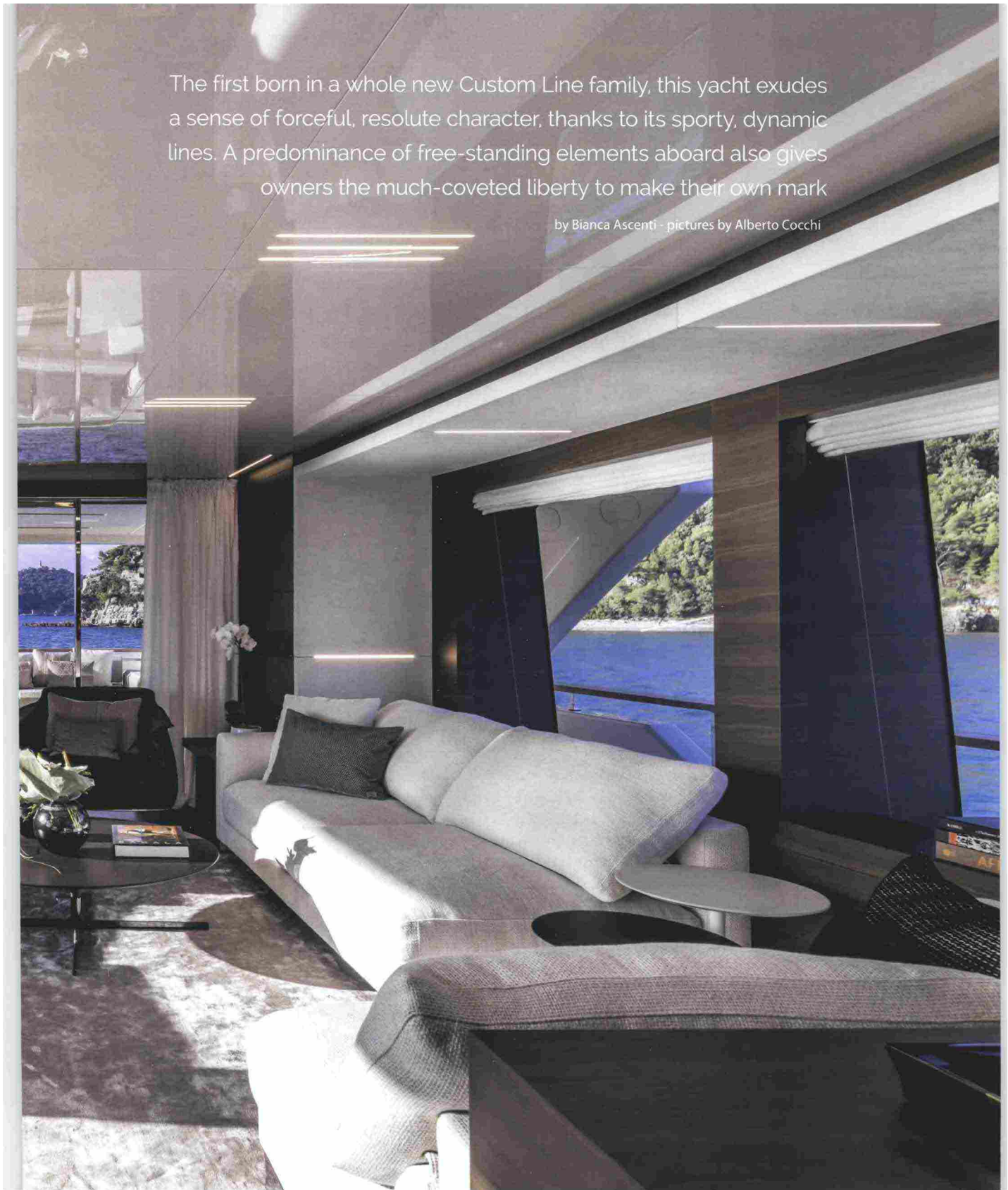
[MEGAYACHT]

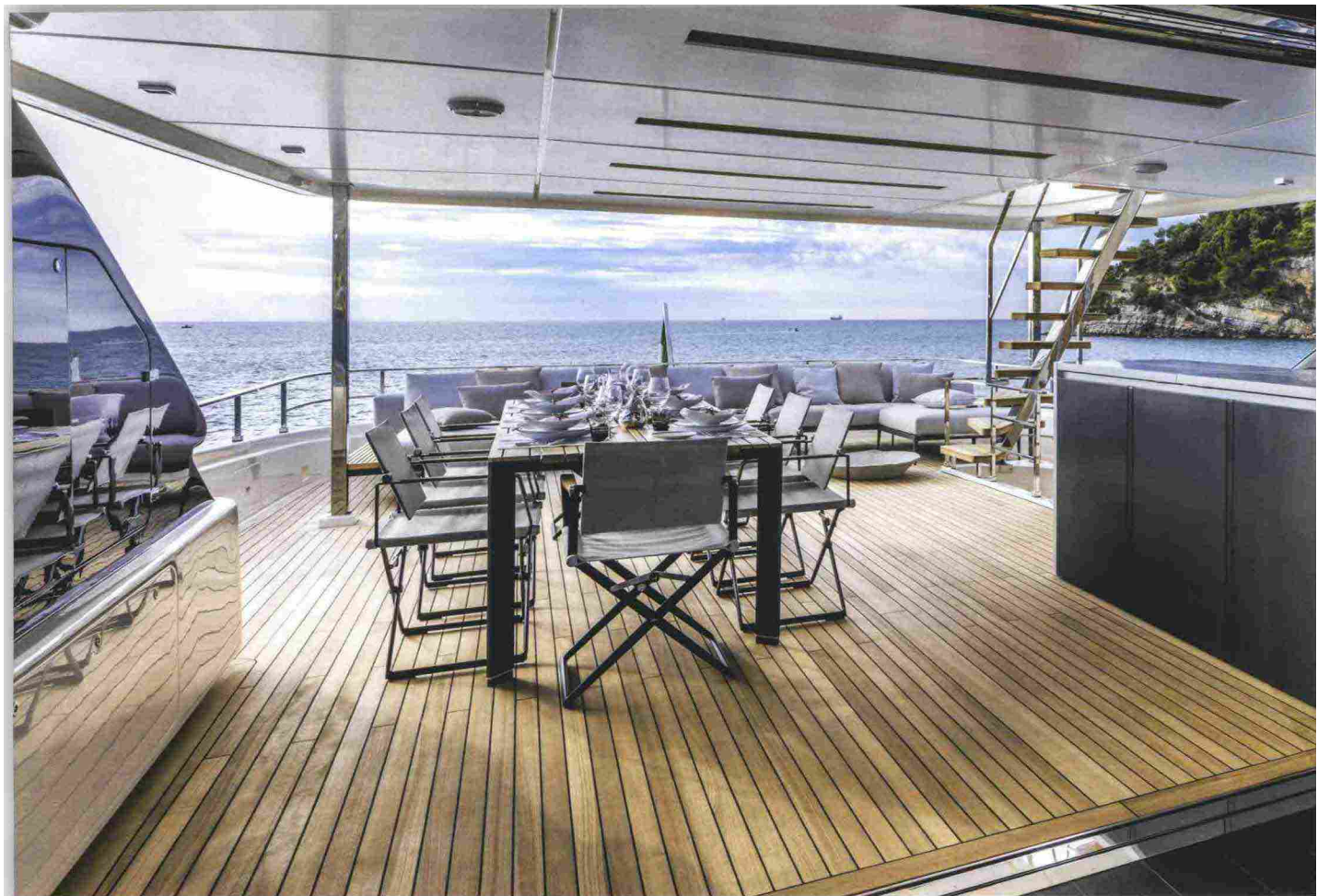
Mavetta 37



The first born in a whole new Custom Line family, this yacht exudes a sense of forceful, resolute character, thanks to its sporty, dynamic lines. A predominance of free-standing elements aboard also gives owners the much-coveted liberty to make their own mark

by Bianca Ascenti - pictures by Alberto Cocchi





Custom Line chose to celebrate its 20th year of superyacht success with a flagship for its semi-displacement line. The glorious Navetta 37 is the product of an evolutionary process and encapsulates the styling cues and technical characteristics that earned the brand its international reputation. However, it does so in sportier garb to tempt both long-distance cruising lovers and owners with a penchant for an edgier kind of design. Hence the yacht's clean dynamic forms and powerful bow stem rising all the way up to the first superstructure level, its wide body master suite, and volumes optimised to an extent that rarely happens on craft of this size. A newly-designed hull and bulbous bow guarantee superb seakeeping in all conditions, while a choice of five engine set-ups, spanning both eight and 12-cylinder units, means there's something for owners with all kinds of seafaring ambitions. Although innovative and modern, visually speaking, the Navetta 37 retains a subtle timeless elegance. Born of a collaboration between Ferretti's Strategic Product Committee, its Engineering Division and Studio Zuccon International Project, the four-deck Navetta 37 has a signature indoor-outdoor vibe created by a system of glass sliders and opening windows. Guests are welcomed aboard the main deck by a large cockpit in light hues with Paola Lenti, Roda and Decon furnishings,

the signatures of the exterior. A glass slider leads through to a chic saloon with both a lounge and a formal dining area. The décor here centres around an interplay of light (leather-trimmed and lacquered areas, nubuck-trimmed doorways) and dark (matt brushed walnut for the furnishings and oak flooring). The Viabizzuno-designed interior lighting features a series of recessed LED in an architectural motif that encapsulates the entire on-board style: large portal frames upholstered in light nubuck leather run along the walls, framing the wide windows. This decorative feature is replicated in all the main rooms on board the yacht. The saloon furnishings, on the other hand, come from Molteni and Poltrona Frau. These include icons of the likes of Archibald Gran Comfort armchairs and Reversi sofas. Poltrona Frau Bob occasional tables break up the symmetry nicely by introducing a less formal, more casual note. The Bolero dining table with tinted glass top is also by Poltrona Frau and is paired with Molteni Chelsea chairs. The whole forward area is taken up by the master suite which has a walk-in closet, vanity area and double bathroom in a graphite-coloured marble. The interplay of colours here is between light and dark leather. The galley, by Ernestomeda, is on the port side amidships, while the central lobby links the upper and lower deck with guests and crew accommodated on the